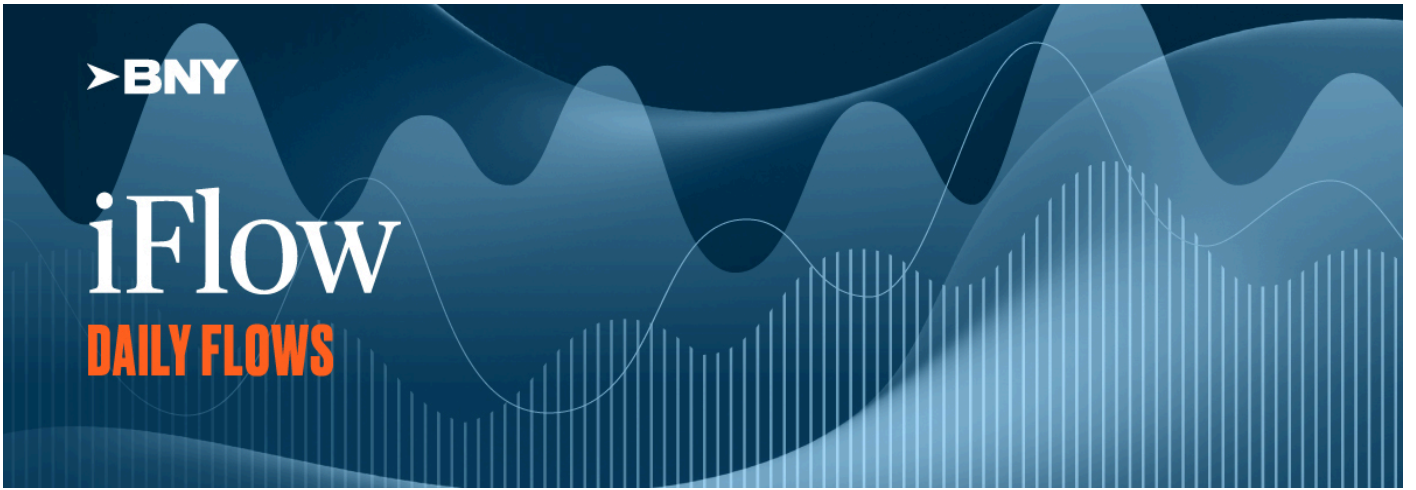


Can't read the email? [Click here.](#)



Daily Flows Highlights - November 07, 2024

iFlow Mood: Risk neutral.

iFlow Styles: Carry decreases, maintaining neutral and non-significant levels. Trend decreases, maintaining significant and positive levels. Value increases, maintaining neutral and non-significant levels.

Currencies:

- **G10+:** Moderate purchases of AUD, JPY, DKK, CHF, and USD with light purchases of SEK; Moderate sales of CAD, NOK, NZD, GBP, and EUR.
- **LatAm:** Light purchases of MXN, CLP, and BRL; Light sales of COP and PEN.
- **EMEA:** Moderate purchases of ILS and CZK with light purchases of HUF; Moderate sales of PLN with light sales of ZAR and TRY.
- **APAC:** Moderate purchases of CNY and TWD with light purchases of THB, IDR, and KRW; Moderate sales of SGD, HKD, and INR.

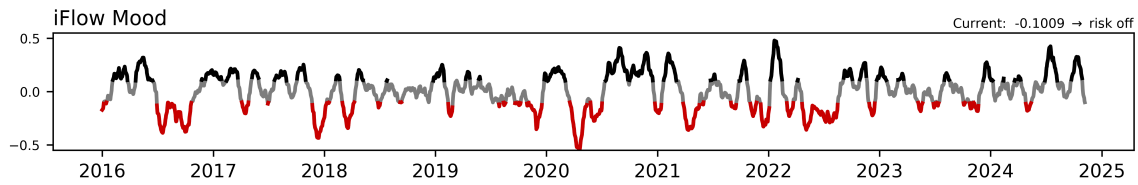
Fixed Income:

- **G10:** Significant purchases of New Zealand with light purchases of the United States, Canada, Eurozone, Denmark, and Japan; Light sales of Great Britain and Australia.
- **LatAm:** Light purchases of Peru; Moderate sales of Colombia and Argentina with light sales of Chile, Mexico, and Brazil.
- **EMEA:** Significant sales of Israel, moderate sales of Turkey and Hungary, and light sales of Poland and South Africa.
- **APAC:** Moderate purchases of India with light purchases of Singapore; Significant sales of Philippines and Thailand, moderate sales of China and Indonesia, and light sales of Malaysia.

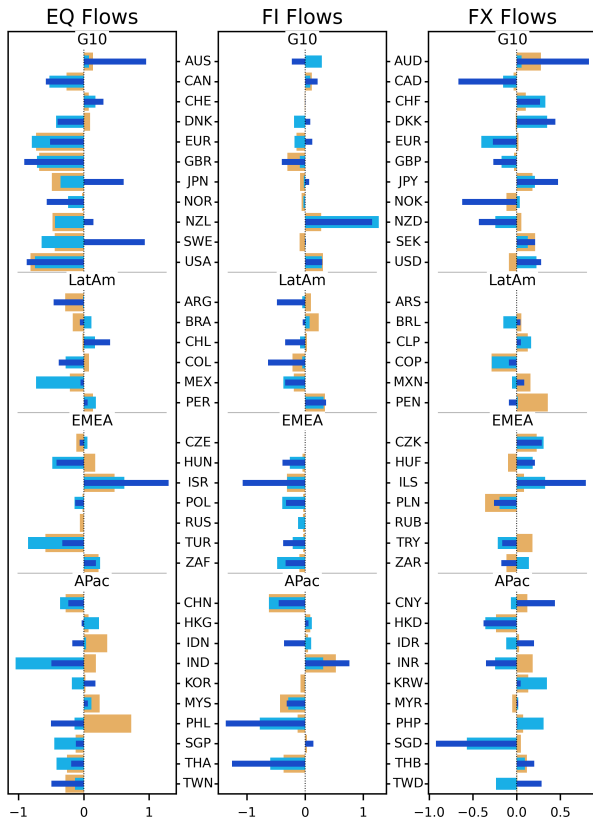
Equities:

- **Global Sectors:** Light to moderate selling across sectors, significantly in Materials; Light purchasing of Real Estate and Utilities.
- **Regionally:** Moderate selling in DM; Moderate selling in EM.

To enlarge iFlow Monitor, please click the image below.



iFlow Mood is the difference between global equity flows & core (Canada, France, Germany, Japan, Switzerland, US, UK) short duration flows
 Regimes: **risk on (Mood > 0.1)** **neutral (-0.1 < Mood < 0.1)** **risk off (Mood < -0.1)**



Bar charts: average flow over last **1 week** **1 month** **3 months**

DM Amer: Canada, United States

DM EMEA: Austria, Belgium, Denmark, Finland, France, Germany, Ireland, Israel, Italy, Netherlands, Norway, Portugal, Spain, Sweden, Switzerland, United Kingdom

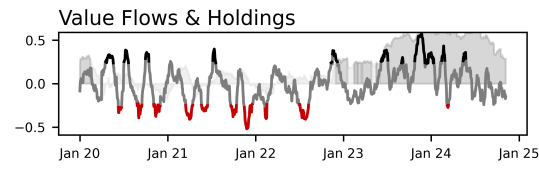
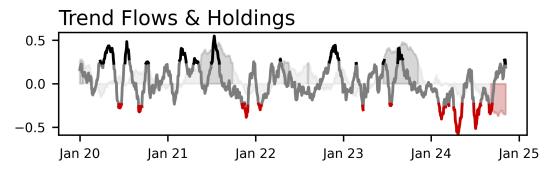
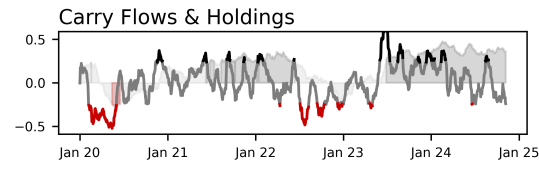
DM APac: Australia, Hong Kong, Japan, New Zealand, Singapore

EM Amer: Argentina, Brazil, Chile, Colombia, Mexico, Peru

EM EMEA: Czech Rep, Egypt, Greece, Hungary, Kuwait, Poland, Qatar, Russia, Saudi Arabia, South Africa, Turkey, United Arab Emirates

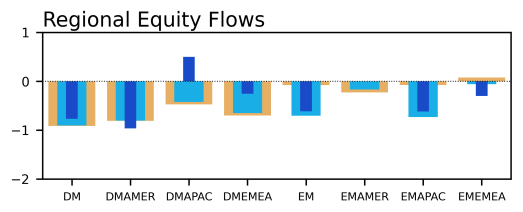
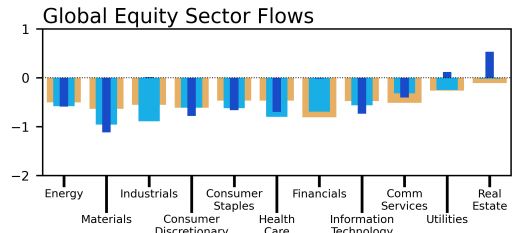
EM APac: China, India, Indonesia, Korea, Malaysia, Pakistan, Philippines, Taiwan, Thailand

Sources: BNY, MSCI, WM/Refinitiv
 Data as of 2024-11-06



Carry, Trend and Value signals are Spearman rank correlations between 20d flow or holdings & 5y yields, 50d / 200d momentum, & 1m / 3y average BIS Broad REER, respectively

Carry/Trend Significance
 — not significant (p > 0.2)
 — significant & positive
 — significant & negative



Please direct questions or comments to:

iFlow@bny.com

Please find below our Daily Flows update.

The charts at the top show iFlow Mood, a measure of investor preference for stocks or bonds, and two iFlow strategy flow/holdings series, Carry and Trend. High/low Mood readings indicate investor behavior is largely risk seeking/aversion. The strategy charts

denote strong/weak flows correlation with each investment style. We add holdings data to each, with grey/red corresponding to statistically significant high/low positioning.

Below the strategy charts, we show normalized aggregate flows of equity, sovereign bond and currencies for 34 economies (bottom right), and global equity flows sector and region (bottom left). The three bars in table show 1 week, 1 month and 3 month average scored flow.

For a detailed explanation of iFlow **Monitor** content [see here](#)

Disclaimer & Disclosures

We take our data protection and privacy responsibilities seriously and our privacy notice explains how we collect, use and share personal information in the course of our business activities. It can be accessed [here](#).

This email was sent to james.cohen@bnymellon.com, and was sent by The Bank of New York Mellon 240 Greenwich Street, New York NY 10286.

Your privacy is important to us. You can opt out from receiving future Newsletters by [unsubscribing via this link](#) at any time. You can also select the topics that you want to receive by [managing your subscription preferences](#).

This message was sent from an unmonitored email box. Please do not reply to this message.

[Contact Us](#) | iflow@bny.com

© 2024 The Bank of New York Mellon Corporation. All rights reserved.