

Daily Flows Highlights - November 08, 2024

iFlow Mood: Risk neutral.

iFlow Styles: Carry decreases, moving to significant and negative levels. Trend decreases, although moves to significant and positive levels. Value increases, maintaining neutral and non-significant levels.

Currencies:

- **G10+**: Moderate purchases of AUD, JPY, USD, and DKK with light purchases of SEK and CHF; Moderate sales of GBP, EUR, NZD, NOK, and CAD.
- **LatAm**: Moderate purchases of MXN with light purchases of CLP and BRL; Light sales of PEN.
- **EMEA**: Moderate purchases of ILS with light purchases of HUF and CZK; Light sales of PLN, TRY, and ZAR.
- **APAC**: Moderate purchases of CNY and THB with light purchases of IDR and TWD; Significant sales of SGD with moderate sales of HKD and INR.

Fixed Income:

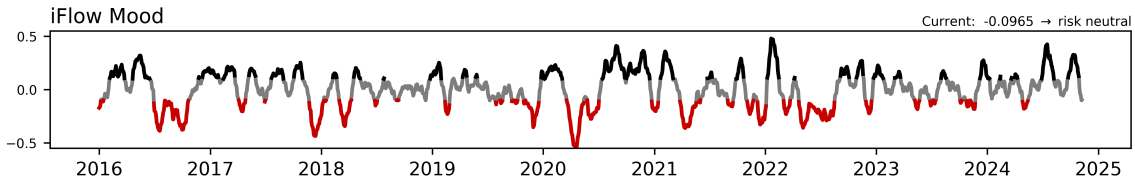
- **G10**: Moderate purchases of New Zealand and the United States with light purchases of Japan; Moderate sales of Great Britain with light sales of Canada, Australia, and Denmark.
- **LatAm**: Light purchases of Brazil and Peru; Moderate sales of Colombia, Mexico, and Argentina with light sales of Chile.
- **EMEA**: Moderate sales of Israel and South Africa with light sales of Hungary and Turkey.
- **APAC**: Moderate purchases of India with light purchases of Singapore and Hong Kong; Significant sales of Thailand, moderate sales of Philippines, Malaysia, and China, and light sales of Indonesia.

Equities:

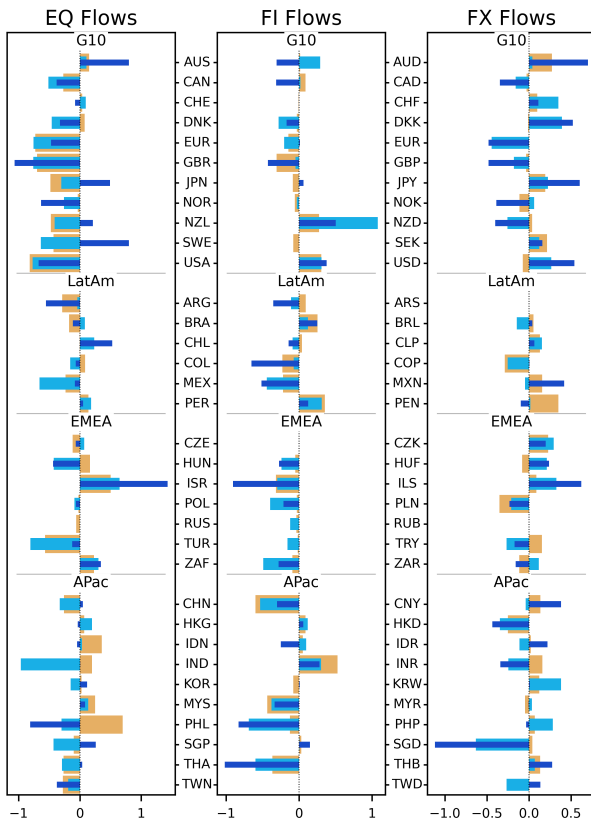
- **Global Sectors**: Light to moderate selling across sectors, significantly in Materials; Light purchasing of Real Estate.

- **Regionally:** Moderate selling in DM; Light selling in EM.

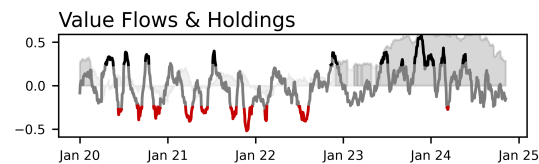
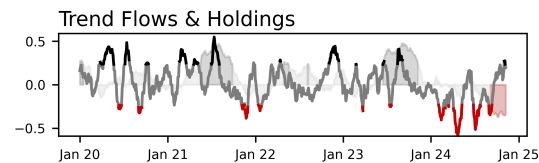
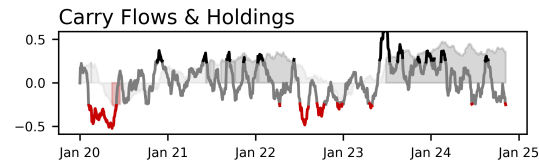
To enlarge iFlow Monitor, please click the image below.



iFlow Mood is the difference between global equity flows & core (Canada, France, Germany, Japan, Switzerland, US, UK) short duration flows
 Regimes: **risk on** (Mood > 0.1) **neutral** (-0.1 < Mood < 0.1) **risk off** (Mood < -0.1)

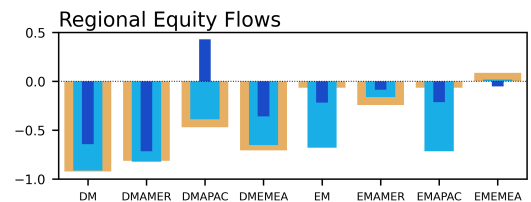
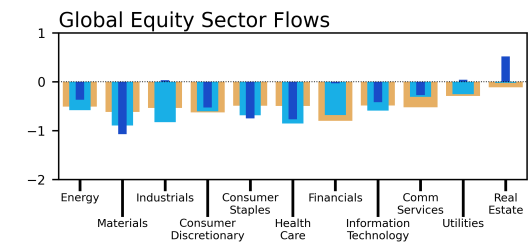


Bar charts: average flow over last **1 week 1 month 3 months**
 DM Amer: Canada, United States
 DM EMEA: Austria, Belgium, Denmark, Finland, France, Germany, Ireland, Israel, Italy, Netherlands, Norway, Portugal, Spain, Sweden, Switzerland, United Kingdom
 DM APac: Australia, Hong Kong, Japan, New Zealand, Singapore
 EM Amer: Argentina, Brazil, Chile, Colombia, Mexico, Peru
 EM EMEA: Czech Rep, Egypt, Greece, Hungary, Kuwait, Poland, Qatar, Russia, Saudi Arabia, South Africa, Turkey, United Arab Emirates
 EM APac: China, India, Indonesia, Korea, Malaysia, Pakistan, Philippines, Taiwan, Thailand
 Sources: BNY, MSCI, WM/Refinitiv
 Data as of 2024-11-07



Carry, Trend and Value signals are Spearman rank correlations between 20d flow or holdings & 5y yields, 50d / 200d momentum, & 1m / 3y average BIS Broad REER, respectively

Carry/Trend Significance
 — not significant (p > 0.2)
 — significant & positive
 — significant & negative



Please direct questions or comments to:

iFlow@bny.com

Please find below our Daily Flows update.

The charts at the top show iFlow Mood, a measure of investor preference for stocks or bonds, and two iFlow strategy flow/holdings series, Carry and Trend. High/low Mood readings indicate investor behavior is largely risk seeking/aversion. The strategy charts denote strong/weak flows correlation with each investment style. We add holdings data to each, with grey/red corresponding to statistically significant high/low positioning.

Below the strategy charts, we show normalized aggregate flows of equity, sovereign bond and currencies for 34 economies (bottom right), and global equity flows sector and region (bottom left). The three bars in table show 1 week, 1 month and 3 month average scored flow.

For a detailed explanation of iFlow **Monitor** content [see here](#)

Disclaimer & Disclosures

We take our data protection and privacy responsibilities seriously and our privacy notice explains how we collect, use and share personal information in the course of our business activities. It can be accessed [here](#).

This email was sent to james.cohen@bnymellon.com, and was sent by The Bank of New York Mellon 240 Greenwich Street, New York NY 10286.

Your [privacy](#) is important to us. You can opt out from receiving future Newsletters by [unsubscribing via this link](#) at any time. You can also select the topics that you want to receive by [managing your subscription preferences](#).

This message was sent from an unmonitored email box. Please do not reply to this message.

[Contact Us](#) | iflow@bny.com

© 2024 The Bank of New York Mellon Corporation. All rights reserved.