



DAILY FLOWS

iFlow

Daily Flows Highlights - January 07, 2025

iFlow Mood: Risk neutral.

iFlow Styles: Carry and Value decrease, maintaining neutral and non-significant levels; Trend increases, maintaining neutral and non-significant levels.

Currencies:

- **G10+:** Significant purchases of CAD, moderate purchases of SEK and NOK, and light purchases of CHF, DKK, and GBP; Moderate sales of EUR, USD, and AUD with light sales of JPY and NOK.
- **LatAm:** Moderate purchases of BRL and COP with light purchases of MXN and CLP.
- **EMEA:** Light purchases of ZAR and CZK; Moderate sales of TRY and ILS with light sales of HUF and PLN.
- **APAC:** Moderate purchases of PHP and IDR with light purchases of TWD, INR, SGD, CNY, MYR, HKD, and THB.

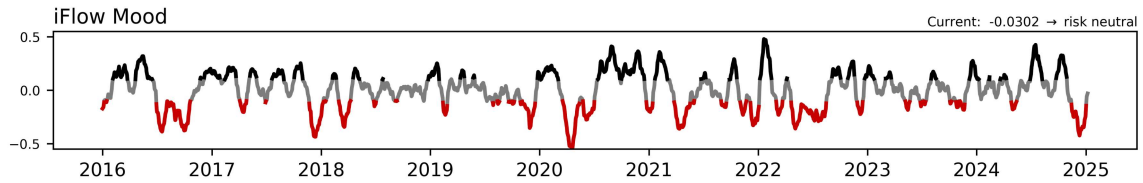
Fixed Income:

- **G10:** Light purchases of Eurozone and Great Britain; Light sales of the United States and New Zealand.
- **LatAm:** Light purchases of Mexico, Argentina, Peru, and Colombia; Significant sales of Brazil.
- **EMEA:** Light purchases of Turkey and South Africa; Light sales of Israel, Hungary, and Poland.
- **APAC:** Significant purchases of India with light purchases of Philippines and Indonesia; Moderate sales of Thailand and China with light sales of Malaysia.

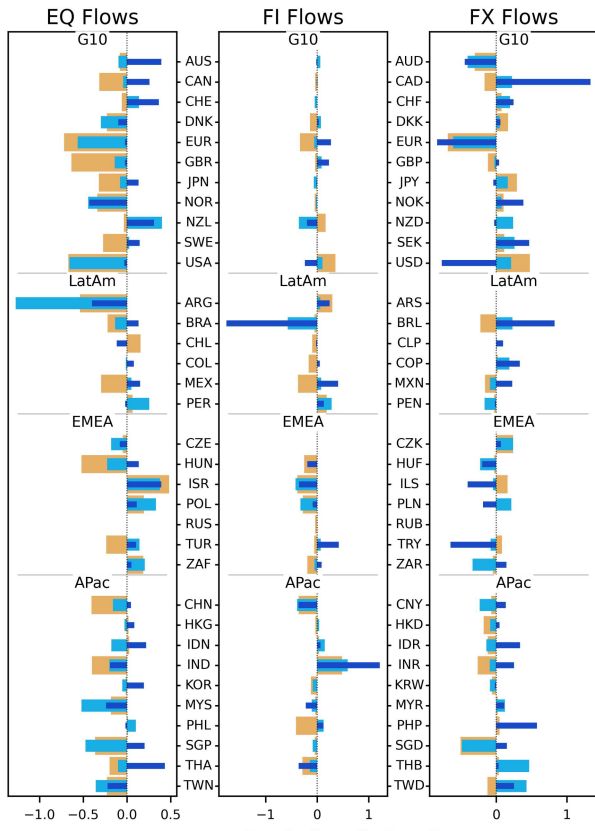
Equities:

- **Global Sectors:** Moderate selling of Comm Services with light selling of Consumer Discretionary, Financials, Real Estate, and Information Technology. Light purchases of Energy, Health Care, and Consumer Staples.
- **Regionally:** Light purchasing in DM; Light purchasing in EM.

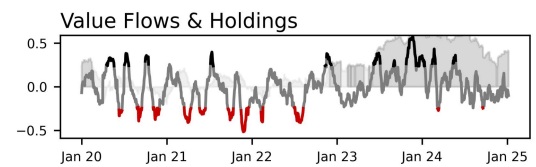
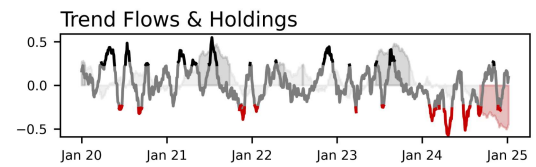
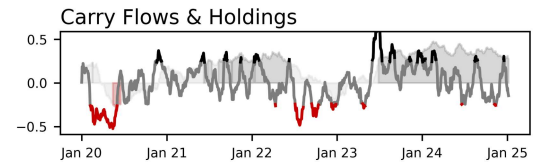
To enlarge iFlow Monitor, please click the image below.



iFlow Mood is the difference between global equity flows & core (Canada, France, Germany, Japan, Switzerland, US, UK) short duration flows
 Regimes: **risk on (Mood > 0.1)** **neutral (-0.1 < Mood < 0.1)** **risk off (Mood < -0.1)**

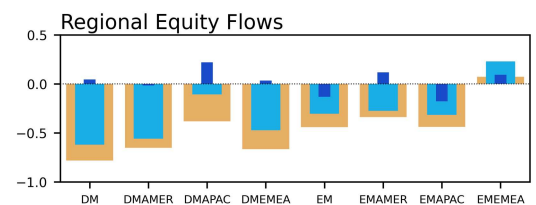
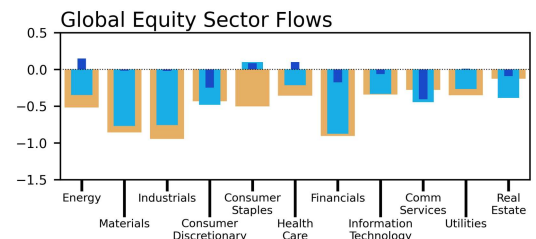


DM Amer: Canada, United States
 DM EMEA: Austria, Belgium, Denmark, Finland, France, Germany, Ireland, Israel, Italy, Netherlands, Norway, Portugal, Spain, Sweden, Switzerland, United Kingdom
 DM APac: Australia, Hong Kong, Japan, New Zealand, Singapore
 EM Amer: Argentina, Brazil, Chile, Colombia, Mexico, Peru
 EM EMEA: Czech Rep, Egypt, Greece, Hungary, Kuwait, Poland, Qatar, Russia, Saudi Arabia, South Africa, Turkey, United Arab Emirates
 EM APac: China, India, Indonesia, Korea, Malaysia, Pakistan, Philippines, Taiwan, Thailand
 Sources: BNY, MSCI, WM/Refinitiv
 Data as of 2025-01-06



Carry, Trend and Value signals are Spearman rank correlations between 20d flow or holdings & 5y yields, 50d / 200d momentum, & 1m / 3y average BIS Broad REER, respectively

Carry/Trend Significance
 — not significant (p > 0.2)
 — significant & positive
 — significant & negative



Please direct questions or comments to:

iFlow@bny.com

Please find below our Daily Flows update.

The charts at the top show iFlow Mood, a measure of investor preference for stocks or bonds, and two iFlow strategy flow/holdings series, Carry and Trend. High/low Mood readings indicate investor behavior is largely risk seeking/aversion. The strategy charts denote strong/weak flows correlation with each investment style. We add holdings data to each, with grey/red corresponding to statistically significant high/low positioning.

Below the strategy charts, we show normalized aggregate flows of equity, sovereign bond and currencies for 34 economies (bottom right), and global equity flows sector and region (bottom left). The three bars in table show 1 week, 1 month and 3 month average scored flow.

For a detailed explanation of iFlow **Monitor** content see [here](#)

Disclaimer & Disclosures

This email was sent to james.cohen@bnymellon.com, and was sent by The Bank of New York Mellon 240 Greenwich Street, New York NY 10286.

We take our data protection and privacy responsibilities seriously and our privacy notice explains how we collect, use, and share personal information in the course of our business activities. It can be accessed [here](#).

Your [privacy](#) is important to us. You can opt out from receiving future Newsletters by [unsubscribing via this link](#) at any time. You can also select the topics that you want to receive by [managing your preferences](#).

This message was sent from an unmonitored email box. Please do not reply to this message.

[Contact Us](#) | iflow@bny.com

© 2025 The Bank of New York Mellon Corporation. All rights reserved.

This message was sent from an unmonitored email box. Please do not reply to this message.